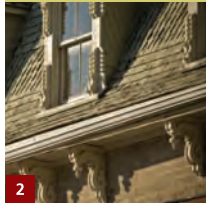




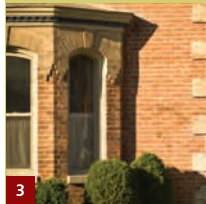
**20 Main Street** Bi-Chromatic Brickwork

This building exhibits features found on many of its downtown neighbours. Under a boomtown mansard roof with pedimented and bracketed dormers, we find a dentilled cornice and bands of contrasting red and buff brick laid in recessed panels and a course of horizontal corbelling.



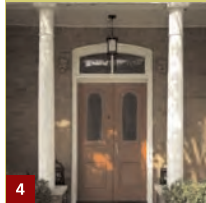
**31-33 Main Street** Pedimented Dormers

The town's grandest commercial building, the Potter Block, boasts a mansard roof with decorative shingles and dormer windows, ornate Italianate brackets, a profusion of elaborate brickwork and an impressive two-level verandah. A prime example of mid-19th century Ontario main street architecture.



**44 Main Street** Paneled and Glazed Doors

The Italianate glazed, double doors with transom, slender columns, inviting recessed porch with its upper gallery, combined with the verticality of the two-storey bays give this impressive house an elegant appearance and a wonderful sense of proportion. Note the twin next door.



**45 Main Street** Formal Town Living

The exuberant polychromatic brickwork combined with a wonderful sense of proportion and massing of elements makes this house one of Warkworth's finest mid-19th century Ontario vernacular houses. Note how the buff brick window surrounds and quoins are set proud to cast shadow and emphasize the decorative effect.



**49 Main Street** Prairie Style

Horizontal banks of windows are frequently found elements in what is broadly termed "the prairie style". In this example, the row of multi-paned windows is set under a hipped gable and illuminates the loft. The bands of shingles cast shadows to give the wall texture.



**52 Main Street** Decorative Trim

This striking frame house with its projecting two-storey bay window and elaborate verandah has an element in the upper gable that alludes to the king posts found in medieval buildings. Although their function was originally structural, its use here is purely decorative.

THE DETAILS YOU VIEW ARE PRIVATE PROPERTY



**56 Main Street** Shingled Showcase

This Queen Anne Revival cottage is a copy book gem. Note the compound gable with its decorative king post and cruck arch (borrowed from medieval timber framing). The shingled bellcast gable is supported by a pair of plain doric columns and the bay window.



**67 Main Street** Arts and Crafts

Arts and craft elements abound in this charming house. The cobblestone piers that support the verandah, and the front door and adjacent window are fine examples of the style. The decorative cedar shingles give texture to the wall surfaces and the overall massing of the building's form gives it a picturesque silhouette.



**30 Centre Street** Corbelling

Warkworth's most impressive chimney. Its imposing silhouette with brick corbelling is an integral architectural element on this former Anglican Church. It is also a lasting tribute to the brick laying skill of the mason who built it.



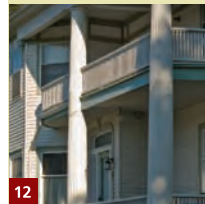
**122 Church Street** Diamond Brickwork

The decorative bargeboard, or gingerbread trim in the gable is both whimsical and capricious and no doubt the original verandah treatment would have been similar. Note the arched windows in the attic and the diamond pattern in the brick between them.



**97 Church Street** Fancy Fretwork

A profusion of fretwork, spools and brackets with elaborately turned posts make this verandah and the one on the side integral design elements in the façades of this late-19th century house. This building also exhibits Italianate elements such as the brackets under the eaves and the hipped roof.



**65 Church Street** Grand Scale

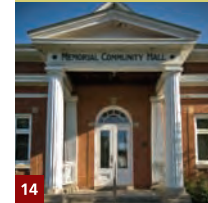
The paneled frieze under the eaves provides a band that horizontally ties together the architectural elements of this handsome early-20th century house. The pediment supported by fluted columns and the two-storey bay window flank the impressive doorways.

ALL DETAILS CAN BE VIEWED FROM THE STREET



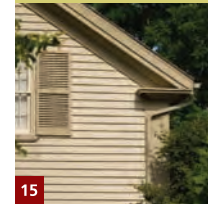
**7 Centre Street** Hipped Roof

This decorative verandah exhibits many features of the woodworkers' catalogue. Fretwork, spools, brackets and turned posts give the house both texture and form. Note elements of the Italianate style such as the fine double doors and the brackets under the hipped roof.



**35 Church Street** Church Street Grandeur

This elegant Classical Revival portico with its fluted columns and engaged pilasters flanking the front doorway were common features used by designers in the early decades of the 10th century. They were rejecting the "over the top" fanciness of the Victorians and looking for design elements that were more restrained.



**12 George Street** Enhanced Fascia

The returned eaves, fascia cornice mouldings and corner pilasters demonstrate how modest materials used with a classic sense of proportion and design can become part of the building's essential character. This garage borrows elements from the main stone house, known as Benfield.



**21 George Street** Victorian Gem

This house demonstrates a plethora of the Victorian woodworker's vocabulary. Note the decorative fretwork, bargeboards and sculpted cedar shingles. The spectacular verandah sweeps across the front of the house and wraps around to follow the entire north façade.



**42 George Street** Three Doors

This simple arched transom over the front door is a rare feature in Warkworth. Note the side doors in the projecting vestibule that would have provided access to verandahs that may have been meant to flank the entrance. This stately house is on a deep lot that extends back to Mill Creek.



**15 Benfield Street** Decorative Entry

The ornate verandah on the front of this buff brick Ontario vernacular house and the remnants of whimsical bargeboard decoration in the gable of testimonials to the original owners who ran the local sawmill.

DO NOT ENTER PRIVATE PROPERTY



**48 Nelson Street** Classic Design

The lines and proportions of this formal portico are classic design. Note the shingled pediment with returned eaves that sits on squared pillars with delicate capitals.



**62 Mill Street** Original Doorway

This verandah, with its bellcast roofline, simple brackets, chamfered posts and cedar shingles, shelters one of the town's finest doorways. The handsome panelled door is framed by an elegant transom and sidelights that would usually be found on a much grander house. Note the tulip cutouts in the apron below the porch floor.



**29 Old Hastings Road** Style and Grace

The delicate brackets and slender posts that support the wrap-around verandah give this charming house, with its idyllic setting overlooking the millpond, a reserved sense of style and grace.



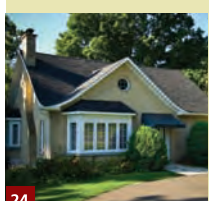
**89 Old Hastings Road** Mirrored Disc

The gazebo-like verandah feature, with its paired columns, sawtooth fascia and ornate finial, is the focal point of this grand house. It is constructed of faux stone concrete block, an early-20th century building material. Also of interest are the cast lintels over the upper windows with their stylized maple leaf pattern.



**94 Old Hastings Road** Cobblestone Chimney

This 1940's house was transformed in the 1970's. This projecting gables were faced in field stone. The posts on the front portico are from the tornado-damaged Brighton Town Hall. The posts next to the garage from the fire-damaged Warkworth Town Hall.



**106 Old Hastings Road** Properly Proportioned

The eye-catching octagonal window in the front gable and the elongated ones on the east and west elevations are elements that make this buff brick house a picturesque example of mid-20th century suburban design.

PLEASE RESPECT THE HOME OWNERS' PRIVACY



## historic warkworth

Nestled amongst seven hills in beautiful Northumberland County, the village of Warkworth is part of a parcel of land originally purchased from the Mississauga First Nation in 1784 to provide land for United Empire Loyalist settlers.

Formerly known as Benfield, the name Warkworth was chosen in 1857 by a prominent early settler, and militia leader Major Henry Humphries who had served in the Northumberland regiment in England.

Today, surrounded by rich farmland and rolling hills, Warkworth's location attracts the surrounding communities as well as a large tourist trade. A thriving arts community, heritage homes, friendly shopkeepers and its array of activities have made Warkworth a destination.

PHOTOGRAPHY BY GARY MULCAHEY  
www.mulcahey.com 905-344-5099 (cell)  
STUDIO AT 28 MAIN STREET, WARKWORTH, ONTARIO



## the village of warkworth



# Details

A SELF-GUIDED WARKWORTH WALKING TOUR

DETAILS make the difference and it could not be more clearly illustrated than viewing architectural elements on some of Warkworth's finest buildings. Whether historic or recent, it is the Details that set these buildings apart.

Enjoy The Walk!

• 2017 •