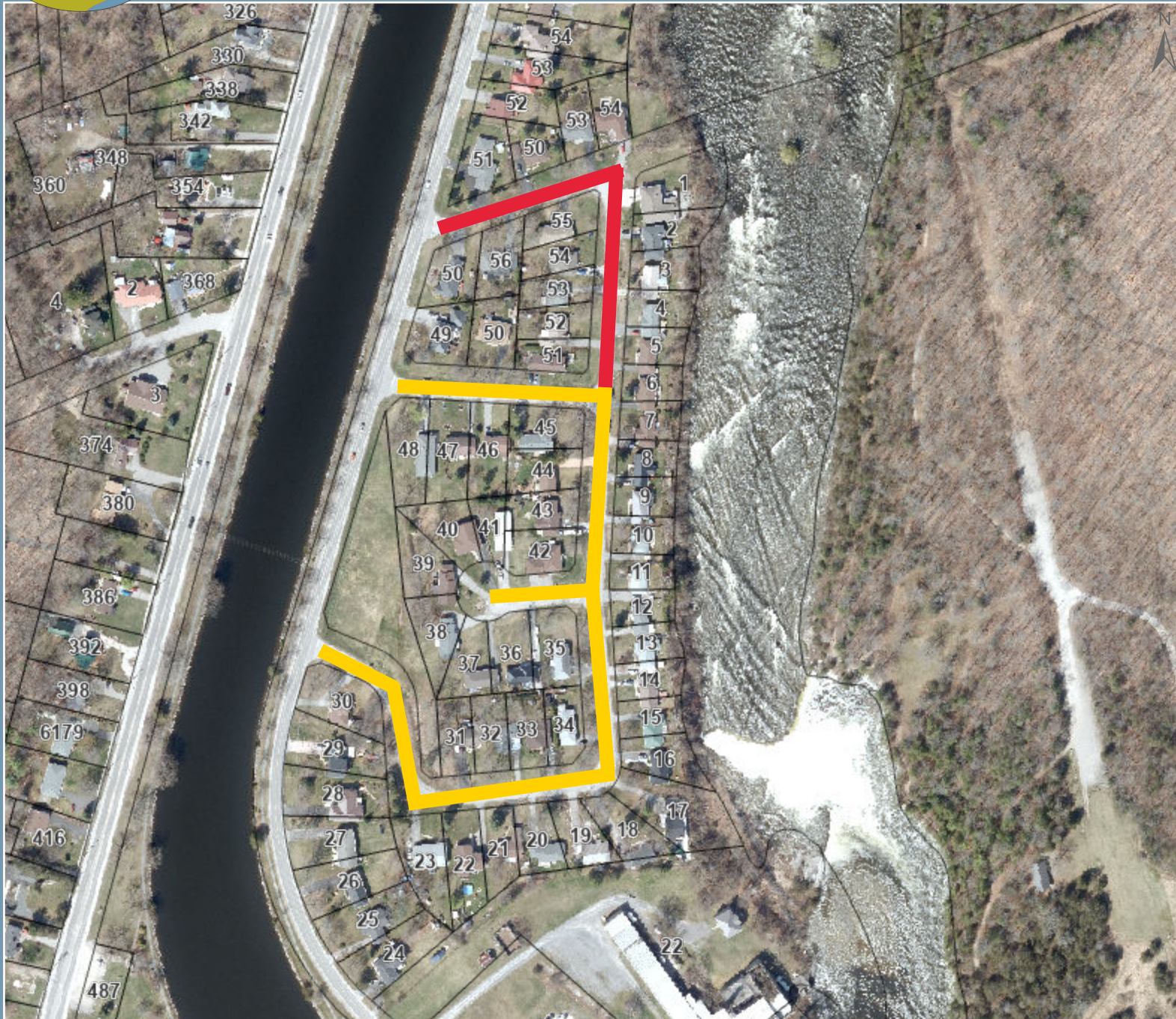


Tanner Rd Subdivision



Legend

- █ Partial Reconstruction (completion of Phase 1)
- █ Full Reconstruction

(c). Copyright. Municipality of Trent Hills 2026. The Municipality of Trent Hills has used reasonable efforts to provide the information contained in this site, however, the Municipality (1) provides no warranty concerning its accuracy or fitness for any intended purpose (2) accepts no liability of any kind which may arise from its use or misuse or from any information being incorrect, incomplete or misleading.

The maps are only intended to provide basic information to the general public. Any geographic information portrayed on the Interactive Map is only a representation and it is not provided to assist in making any decision which may require a legal survey or a professional opinion. Any party interested in using the Municipality's mapping for commercial use must contact info@trenthills.ca to arrange for payment and/or to sign a formal User Agreement.



Source: Northumberland County, 2026, MNR, 2026. May Include Material (c) 2026 of The King's Printer for Ontario. All Rights Reserved.